

Rameaux d'hiver



*Acer negundo*



*Acer pensylvanicum*



*Acer rubrum*



*Acer saccharinum*



*Acer saccharum*



*Acer spicatum*



*Alnus incana*





*Alnus alnobetula*



*Amelanchier*



*Betula alleghaniensis*



*Betula papyrifera*



*Carya cordiformis*



*Cornus sericea*



*Corylus cornuta*



*Crataegus*





*Diervilla lonicera*



*Fagus grandifolia*



*Fraxinus americana*



*Fraxinus nigra*



*Ilex mucronata*



*Juglans cinerea*

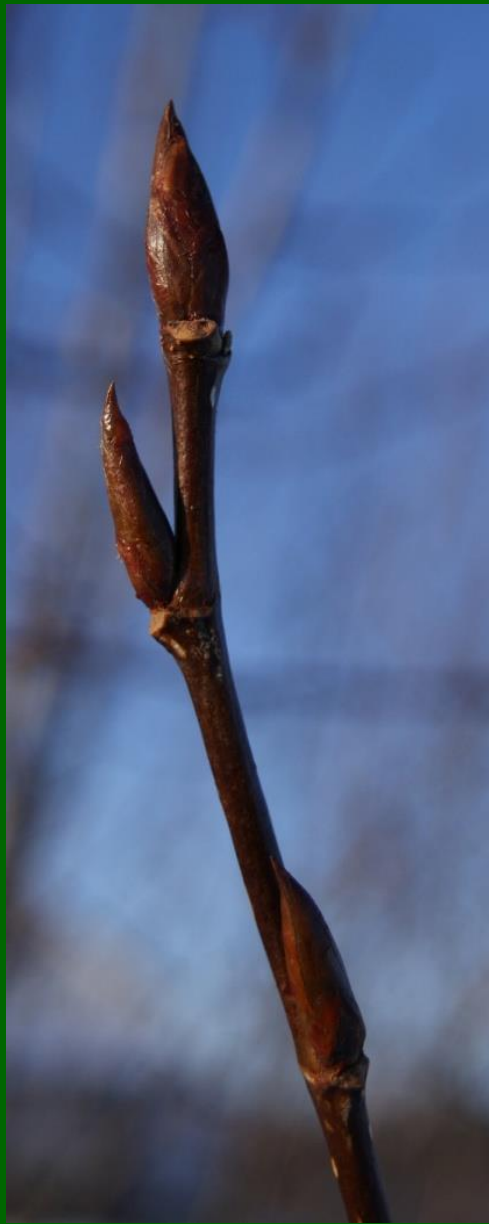


*Larix laricina*



*Myrica gale*





*Populus balsamifera*



*Populus deltoides*



*Populus grandidentata*



*Populus tremuloides*



*Prunus pennsylvanica*



*Prunus serotina*



*Prunus virginiana*



*Quercus macrocarpa*

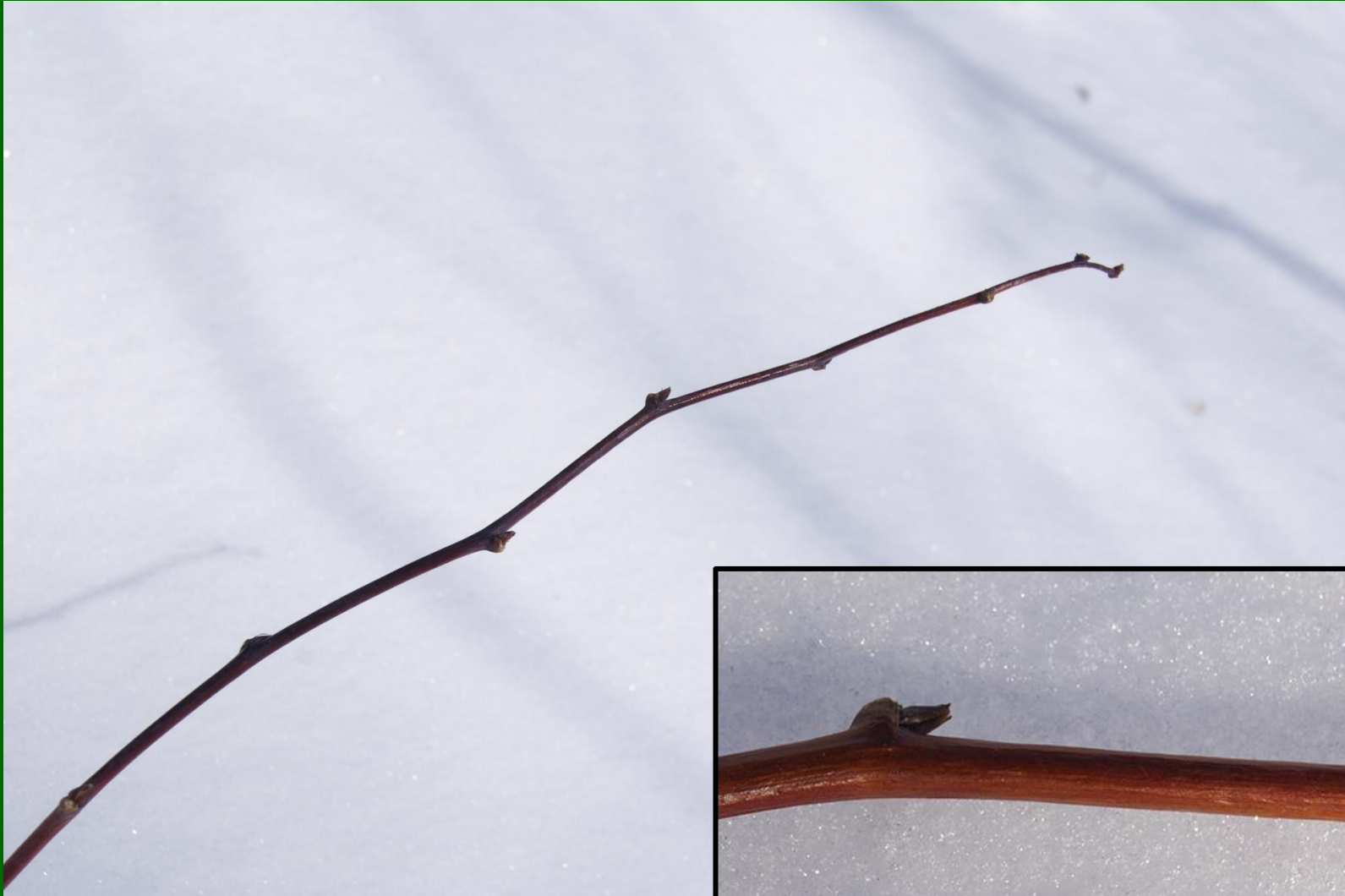




*Quercus rubra*



*Ribes lacustre*



*Rubus idaeus*



*Salix*



Moelle de couleur saumon

*Sambucus racemosa*



*Sorbus americana*



*Spiraea alba*



*Tilia americana*





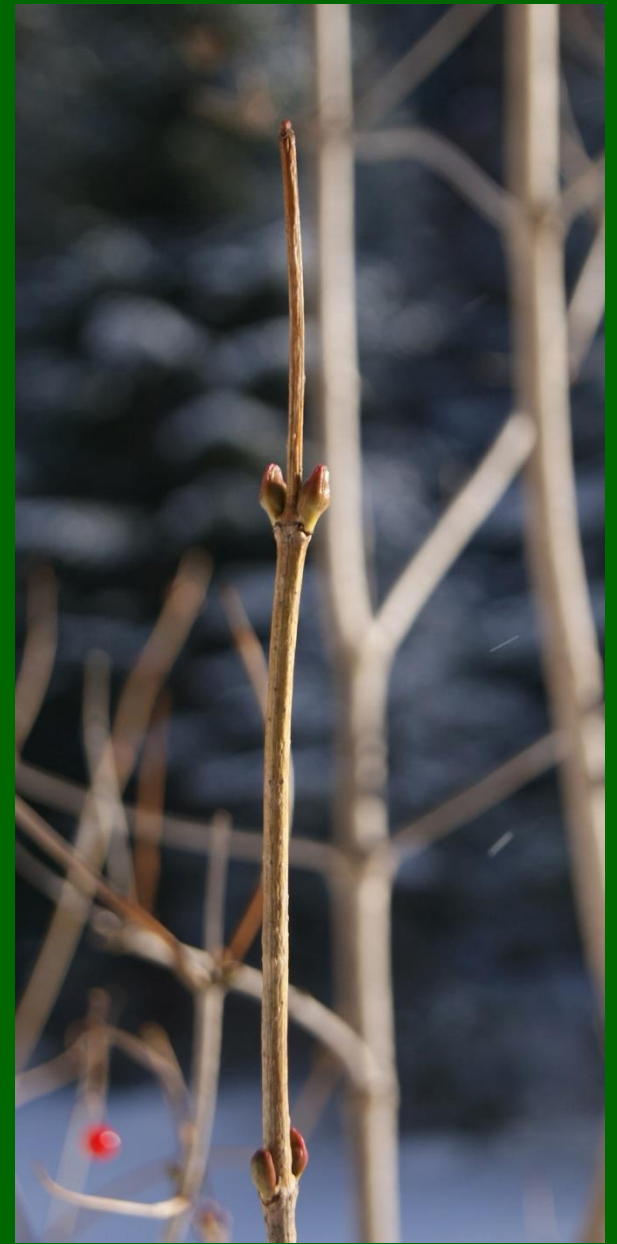
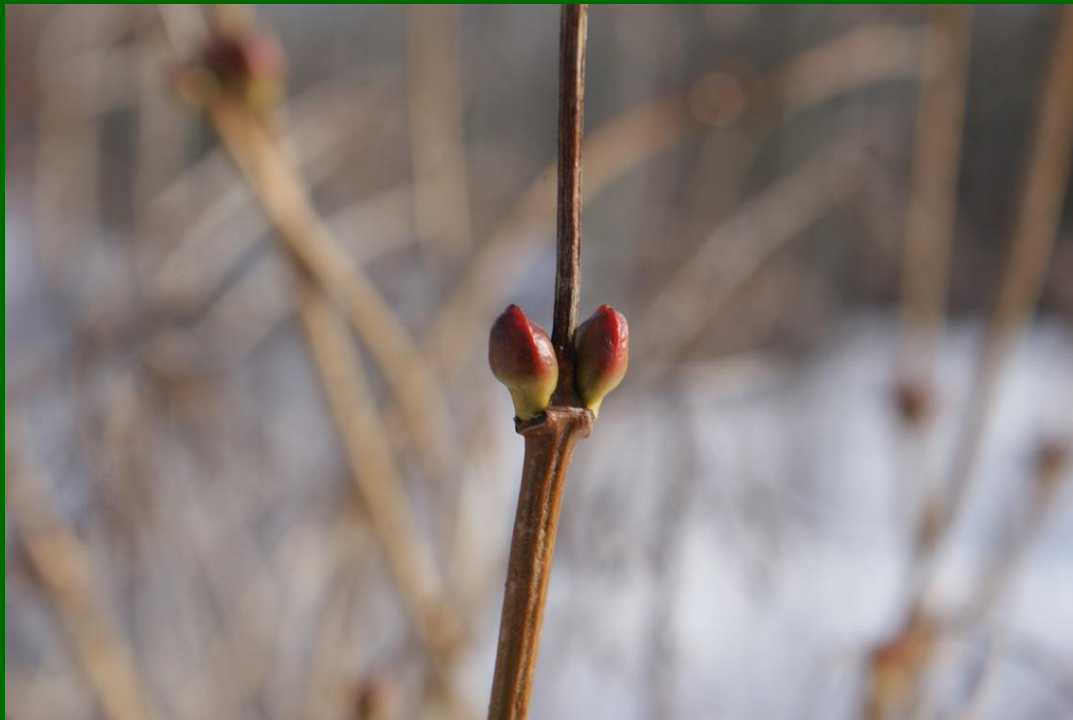
*Ulmus americana*



*Viburnum cassinooides*



*Viburnum lantanoïdes*



*Viburnum opulus*